

CERTIFICATE OF LOCATION OF GOVERNMENT CORNER

NORTH QUARTER Corner of Section 3, Township 106, Range 39, 5TH P.M.

STATE OF MINNESOTA, County of MURRAY

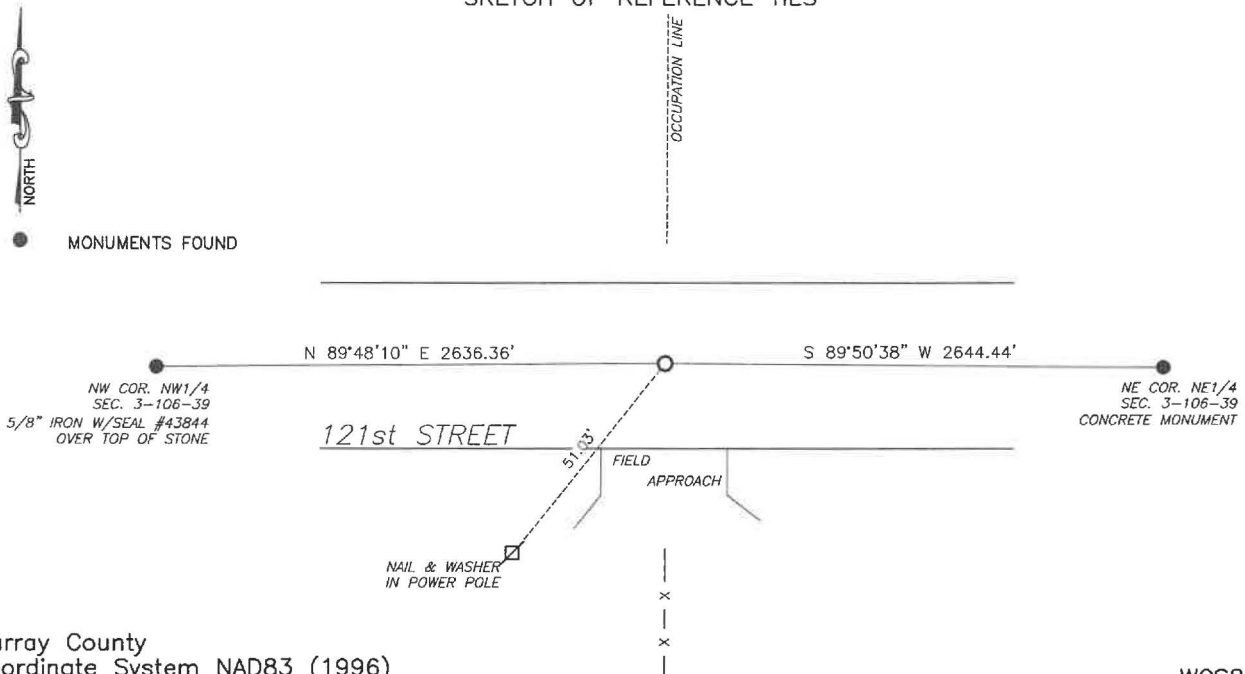
At the corner location shown on the sketch:

☒ On 8/12/2024 found a Large 12"x18" limestone monument.
DATE

☒ left monument as found, ☐ lowered monument, ☐ removed monument (explain)

☒ On 1/16/2025 placed a 5/8" iron with seal #43844 over top of the stone.
DATE

SKETCH OF REFERENCE TIES



Murray County
Coordinate System NAD83 (1996)

N: 163483.635
E: 566865.590

WGS84

LAT: 44°01'18.8708"
LON: -95°30'44.9560"

Statement of evidence relative to this corner location is on back of page.

I hereby certify that this document and the data contained herein was prepared by me or under my direct supervision.

Daniel L. Bueltel

License No. 43844

3/12/2025
DATE

MAR 13 2025

MURRAY COUNTY RECORDER

Statement of Evidence

NORTH QUARTER CORNER SECTION 3, T106N, R39W of the 5th P.M.

In September 1858, W.J. Neely surveyed the east township line.

In July of 1861, J.W. Myers surveyed the north, south, and west township lines.

In August of 1861, Wellman & Smoot subdivided the township.

On August 12, 2024, Bueltel-Moseng Land Surveying dug a large hole with a backhoe and found a large 12"x18" soft limestone monument. The stone is 2' west of fence to the south, 3 feet west of the fence to the north, and 3 feet south of road centerline. Placed a 2.5' long fence post over top of the stone.

Returned on January 16, 2025 and set a $\frac{5}{8}$ " iron with seal #43844 over top of the stone.